

2025 Election

THE WOMANIFESTO

A Nonpartisan Ballot Guide to Strengthen Colorado by Voting With Women in Mind

wo•man•i•fes•to

noun: a public proclamation of policy goals, intentions, or views, especially one issued before an election; a policy statement or platform

The Women's Foundation of Colorado is the only statewide, community-funded foundation protecting progress and advancing gender, racial, and economic equity for all Colorado women. We leverage community investments and every tool we have to dismantle systemic barriers, close equity gaps, and build a more just and prosperous state for all women.

As a community, when we vote, we shape the future we want to live and work in. WFCO created The Womanifesto to help you ensure – with your vote – all 2.9 million Colorado women and girls thrive and Colorado rises.

Voting is our opportunity to ensure Colorado continues to be a leading state for women's safety, opportunity, and prosperity.

WFCO identified two statewide ballot measures and two local ballot measures that will advance and accelerate economic opportunity for Colorado women and their families.

We encourage you to review all measures on your ballot.



LEARN MORE

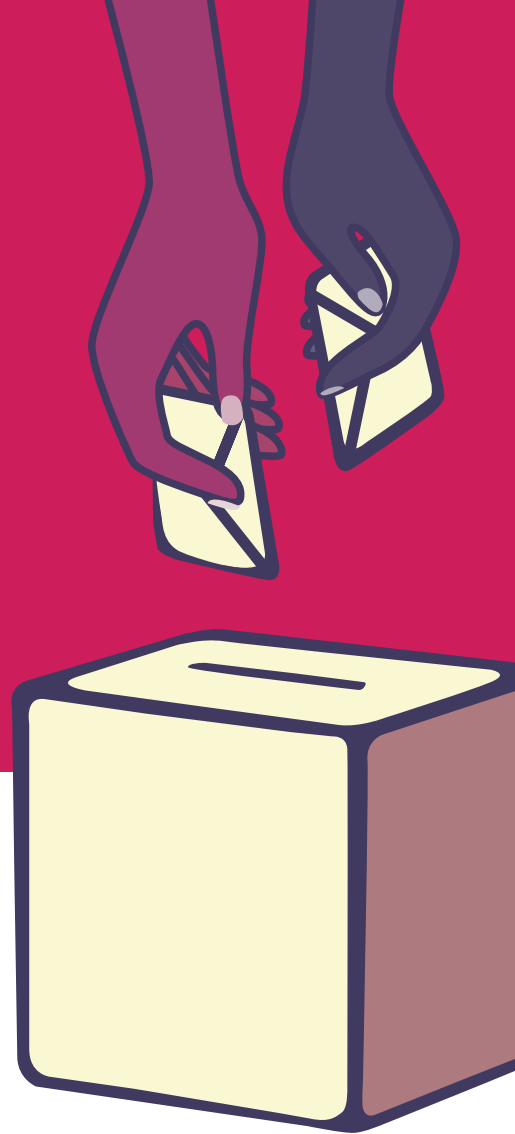
Please visit wfc.org/womanifesto using the QR code to view more resources and additional positions.

Esta guía electoral también está disponible en español utilizando el código QR que esta a continuación.

**IT'S
ABOUT
PEOPLE,
NOT
POLITICS!**

**VOTE BY 7 PM ON
NOVEMBER 4, 2025**

 **The Women's
Foundation of Colorado**
Women Thriving. Colorado Rising.®



STATEWIDE MEASURES

Both statewide measures WFCO has taken positions on concern a program called Healthy School Meals for All (HSMA). Healthy School Meals for All allows schools participating in the National School Lunch and Breakfast programs to offer breakfast and lunch to students at no cost and invests in quality local food, technical assistance to support schools in providing more from-scratch meals, and higher wages for cafeteria workers.



Proposition LL: Retain and Spend State Revenue Exceeding the Estimate for Proposition FF

This proposition allows the state to keep and spend \$12.4 million in tax revenue that has already been collected under Proposition FF, which voters passed in 2022, to support HSMA.

It also does two other things:

1. Keeps in place the tax deduction limits that voters approved in 2022
2. Allows the state to keep and spend any future tax revenue collected under those same deduction limits



Proposition MM: Increase State Taxes for School Meals and Food Assistance Programs

This proposition increases income taxes on households that earn \$300,000 or more per year. It would raise up to an additional \$95 million in 2026.

The tax revenue would be used for two programs:

1. Fully fund HSMA
2. Support SNAP, the Supplemental Nutrition Assistance Program that helps low-income families buy food

Why WFCO supports both LL and MM:

Women are more likely to be primary caregivers and often bear the responsibility of providing meals for their families, making access to healthy school meals and nutrition assistance programs critical to their economic security and their children's wellbeing. These measures fund programs that help low-income families—where women, especially single mothers and women of color, are overrepresented and disproportionately experience food insecurity – access nutritious food.

By raising revenue from higher-income households rather than those struggling financially, the measures create a more equitable system that doesn't place additional strain on women with fewer resources. Investing in child nutrition through school meals also supports women's ability to work and participate in the economy, knowing their children have access to healthy food while they are at school. Adequate nutrition is essential for children's cognitive development and academic performance—hungry children struggle to concentrate, learn, and succeed in school. By ensuring children receive nutritious meals, these programs help break cycles of poverty that disproportionately affect families headed by women.

LOCAL MEASURES

WFCO supports the following local measures because they will help more women and families access child care through local, community solutions while also supporting the early childhood infrastructure in the state. Throughout the state counties are no longer taking families for the Colorado Child Care Assistance Program (CCCAP). While a larger public investment is vital for a thriving early childhood sector, these local revenue streams will support more investment in communities where it is more challenging to access CCCAP.



Larimer County - Ballot Measure 1B

If passed the measure creates a small sales tax increase of 0.25% (25 cents on every \$100 purchase) to support early childhood programs in Larimer County. This would raise about \$28 million per year.

Where does the money go?

1. Pay early childhood teachers more – Increase wages and provide training opportunities for teachers who work with young children
2. Make child care more affordable for families – Reduce costs for families with children from birth to age 5
3. Expand child care options – Improve the quality of existing programs and create more childcare and preschool spots in the community

Essential everyday items would NOT be taxed, including:

- Groceries
 - Diapers
 - Medicine
 - Menstrual products
-



Eagle, Garfield, and Pitkin counties – Confluence Early Childhood Development Service District Ballot Issue (number varies by county)

If passed in each county, this measure creates an Early Childhood Service District to help families afford child care and preschool before their kids start kindergarten.

Where does the funding come from?

A 0.25% sales tax increase (25 cents for every \$100 spent), which would raise about \$10 million per year.

Where does the money go?

1. Tuition credits for families – Financial help to lower the cost of child care and early education for young children
2. Provider grants – Money to help childcare businesses start up, expand, and hire and keep qualified early childhood teachers

Essential everyday items would NOT be taxed, including:

- Groceries
- Diapers
- Medicine
- Menstrual products

COLORADO STATEWIDE MEASURES

PROP LL

Yes No Undecided

Notes:

PROP MM

Yes No Undecided

Notes:

LOCAL COUNTY MEASURES

LARIMER COUNTY BALLOT MEASURE

Yes No Undecided

Notes:

EAGLE/GARFIELD/PITKIN COUNTIES BALLOT MEASURE

Yes No Undecided

Notes: